

# VEIT 8657 Tunnel Finisher



Advantages



Video



Brochure



Technical Data



Home





## Advantages

- Productivity
- Quality
- Easy to use
- Flexibility



Back



## Productivity

- Extremely high productivity depending on the fabric of up to 3000 pcs / h
- Depending on the level of automation before and after the Tunnel Finisher only one operator is needed.
- Space savings.



Back



## Quality

- Consistent quality independent from operator.
- Ideal for synthetic fibres, with the adjustable steam quality also natural fibres can be finished with good results.
- No touch up or only very little touch up necessary.
- Consistent pressure for the spraying steam so no fluctuation in quality.
- Adjustable steam quality (wet or dry steam) for best finish results.
- Adjustable suction to regulate the amount of steam inside the unit.
- No condensate because of heated walls.
- Special Teflon lacquer coated steam unit walls to avoid burning of synthetic fibres and for easy cleaning.
- Air lock unit avoids direct contact of rollers with the garments after steaming for better finish results.



**Back**



## Easy to use

- Big, self explanatory Touch screen display for control of all relevant parameters.



Back



## Flexibility

- Nearly all kinds of garments can be finished on a Tunnel Finisher (except knitwear).
- Depending on size and garments to be finished the Tunnel Finisher can finish high quantities giving you flexibility in production.



Back



Pressing for Excellence



# Brochure





## Cotton Care Module



### Efficient preconditioning of natural fibres with water spraying technology

With its Cotton Care module, the VEIT 8657 Tunnel Finisher achieves unrivaled finishing results, even for difficult-to-process natural fibres.



The decisive factor for this stunning finishing quality is the high-pressure water spraying technology. The micro-fine nebulization allows the water to permeate into the fibre and makes it swell. The effect is amazing: Even hard creases, e. g. in linen garments or jeans, disappear. The unwelcome wash-effect is also avoided.

#### Lower energy consumption, higher efficiency

With the integrated Cotton Care module, the Tunnel Finisher's total energy consumption clearly decreases. By using water as the sole energy carrier, energy-intensive steam consumption of the steam modules is significantly reduced. The amount of energy saved depends on the type of material.



#### Benefits at a glance:

- > Significantly improved finishing results for natural fibres
- > Lower total energy consumption
- > Higher efficiency



Back





## Steam Module



### Adjustable and consistent steam quality for reliable finishing performance

VEIT sets standards in steam application: With the even spraying and the adjustable level of humidity, a consistent, effective finishing result can be achieved for all kinds of textiles.

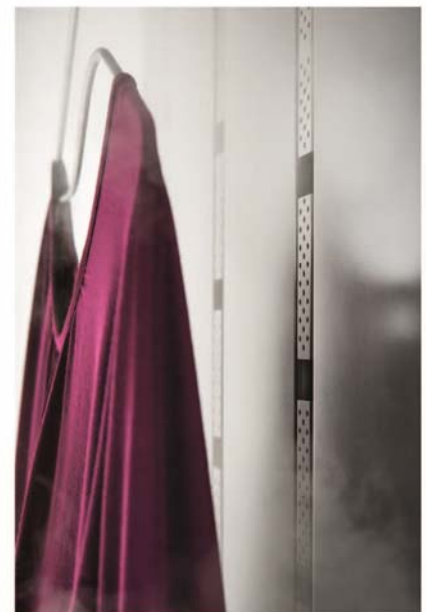
The correct level of humidity in the steam spray is decisive for the finishing quality of the garment. With the steam module in VEIT's 8657 Tunnel Finisher, it can be individually adjusted: wet steam for natural fibres, dry steam for synthetic fibres. Thus, customers can be sure to get an excellent effect for any type of material.

#### Consistent distribution of steam

The VEIT steam valve in combination with the special steam jet ensure even spraying and a homogenous distribution of steam. Unwelcome streaks on the garment are thus a thing of the past. Steam jets are deppened to prevent any damage to the garment.

#### New coating of interior walls

Due to a Teflon-resin coating, the inner walls of the steam module do not get hot and are very easy to clean.



#### The benefits are obvious:

- › Avoids garment damage from hot surfaces
- › Easy cleaning results to keep the machine in a good state



Back



## Air Module



### Consistent, energy-efficient drying and smoothing

A reliable and effective air module is a decisive factor in achieving a maximum of crease elimination. To this effect, VEIT has equipped its Tunnel Finisher 8657 with a particularly powerful blower.



The high performance of the generation of blowers is most obvious with high pass-through speeds. The dimensions of the inner tunnel with a height of 180 cm / 70.8 inch and a length extended to 125 cm / 49.2 inch allow an excellent finishing quality even for long textiles.

#### Optimized air circulation, perfect finishing

Air deflection, based on the wind tunnel principle, reduces flow losses to a minimum. Air circulation is channeled to the purpose of drying and smoothing the steamed goods as gently yet effectively as possible. Thanks to the efficient blower technology, the entire Tunnel Finisher needs much less energy. This effect is supported even further by the recycling of warm air in the circulating air modules.

#### Easy neutralisation of odours

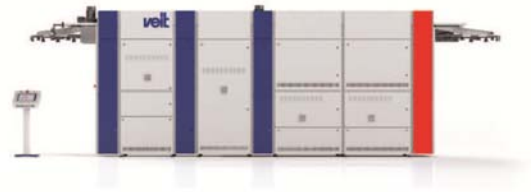
Unpleasant odours in textiles can be effectively eliminated during the drying process by simply spraying a neutralising fragrance into the circulating air module.



Back



## Exit Module



### Stunning steam doll effect makes good finishing perfect

**In the exit module, the smoothened goods are brought to volume. So the top-quality finishing result meets the eye even more.**

A particularly good effect of the elaborate air flow through the exit module can be achieved even with dense and padded garments. In order to get a steam doll effect, the garment is blown simultaneously from the top and from the bottom to receive its voluminous finishing touch.

The height of the exit module can be automatically adjusted to meet the length of the textile. This guarantees a maximum steam doll effect in all cases.



Back



Pressing for Excellence



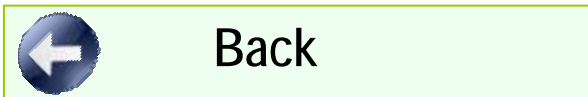
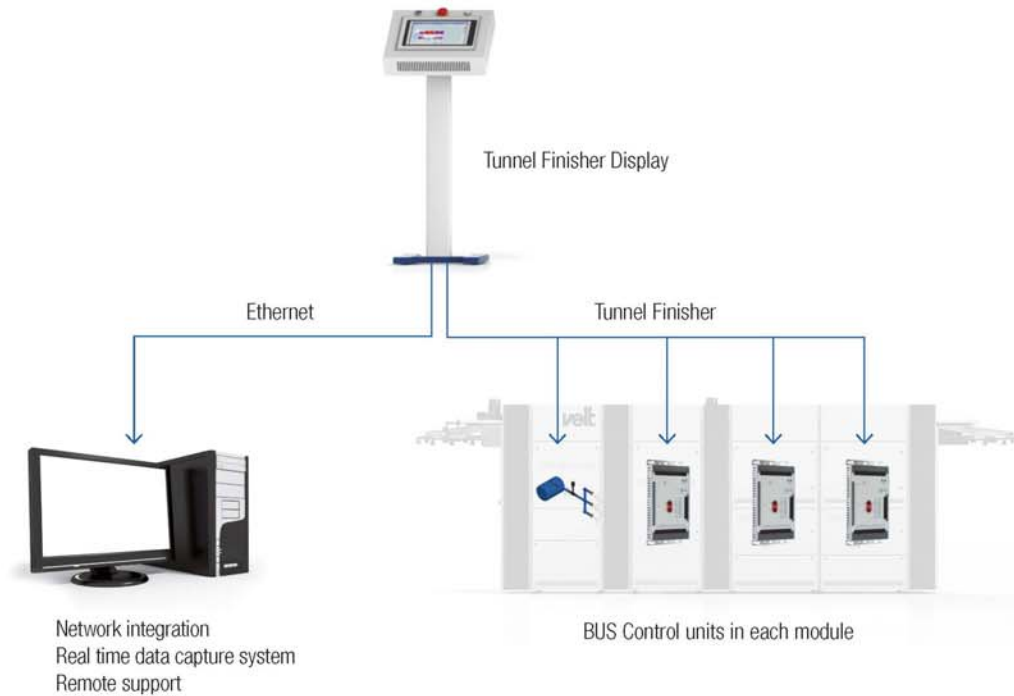
# Touch Screen

## Centralised control through the user-friendly operating unit

Easy operating, service-oriented maintenance: The touch screen in the operating unit allows the control of any module of the VEIT 8657 Tunnel Finisher.



The control systems of the individual modules are connected with the control unit through a BUS cable. Its user-friendly surface allows fast access to all important functions and parameter setting of each module. In addition, programs can be stored and retrieved when necessary.





## Transport Hook System

### Safe and easy transport with a system

The transport hook system in our VEIT 8657 Tunnel Finisher ensures smooth and careful transport of the garments through the Tunnel Finisher. And even better: It offers a wide variety of loading options.



The improved Conveyor System is driven by a maintenance-free chain system. The transport chain is guided in soft curves through sliding guides rather than via sprocket wheels. This method allows the system to work reliably with minimum maintenance.



#### For any kind of hangers and materials

The special form of the hooks and their distance of 25 cm from each other permit transporting almost any clothes hanger. Adjusting the loading station to the various hangers is easy, with no tools required.



#### Loading is extremely flexible and adjustable to the type, size and volume of the garment:

- > For light goods, each hook can be loaded
- > For more voluminous material, every second, third or fourth hook is needed
- > For easy-to-finish garments, two pieces may be loaded to one hook in order to save energy



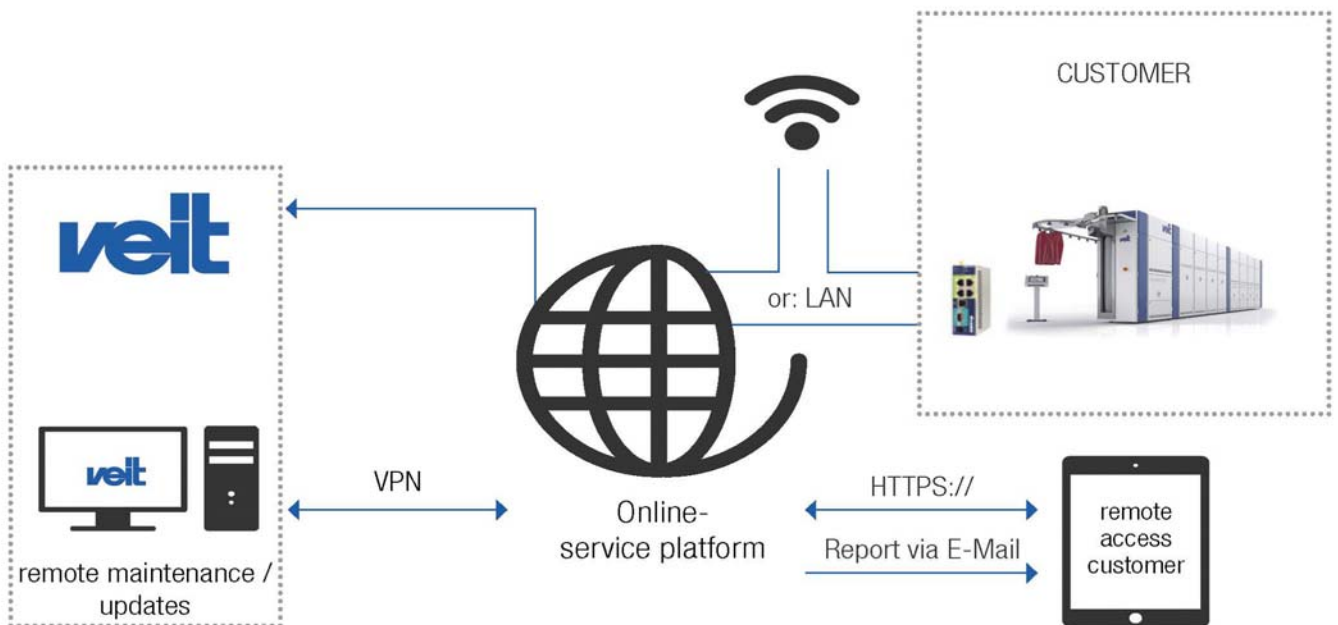
Back



## Maintenance and Service

### Fast and easy via online-platform

For the Tunnel Finisher 8657, VEIT offers online support as an optional service. Your benefit: short reaction times in the event of malfunctioning or production standstills. Also, processes can be addressed directly at any time.



For online maintenance and service, VEIT offers a contract to its customers. Their Tunnel Finisher will then be connected via the online service platform with VEIT's service unit. Thus, any due maintenance, updates or error analyses can be performed quickly through the platform. Also, customers can access and supervise their own production processes through the online service platform. Wherever and whenever they want.

#### Individual consulting, customized solutions

VEIT experts will support you in finding best solutions, and to advise you in person on planning and implementing your individual maintenance contract. Please contact us!



Back

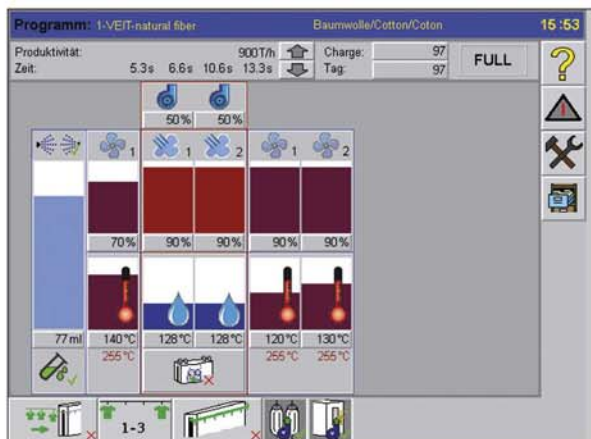


**eMotion**  
*more performance  
 more quality  
 less energy*

## Your Benefits

### VEIT 8657 Tunnel Finisher: high performance, low energy-consumption

Even better finishing quality with significantly less energy needed: The VEIT Tunnel Finisher generation sets standards in efficiency thanks to a whole bundle of technological innovations.

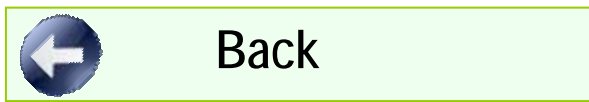
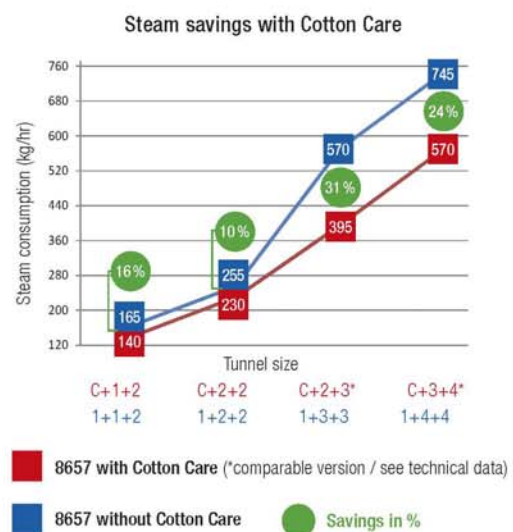
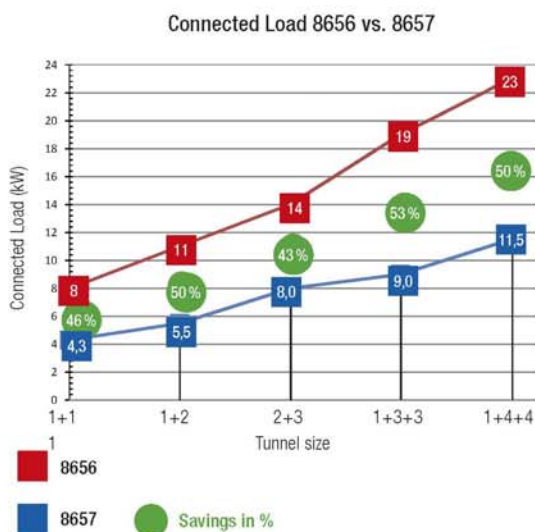


Plenty of process improvements help to significantly decrease total energy consumption as compared to previous models. In total, the Tunnel Finisher's connected load is lowered by approximately 40 per cent – a clear reduction in energy cost. An important feature here is the e-Decrease function, with very low airflow while the machine is in stand-by, allowing full performance to resume immediately after any idle team with no need to be heated up again.

#### The benefits in energy efficiency at a glance:

- > Efficient blower generation with high performance and reduced energy consumption
- > Fine spraying technology to lower the required steam quantities
- > Flow-optimised airflow to minimize losses
- > Recycling of warm air reduces energy consumption
- > Height-adjustable exit module for less heat loss
- > Insulation helps to save energy
- > E-Decrease function limits air flow from blower engines to about 10 percent during standby

Connected load/Consumption data	Cotton Care soft water consumption	Steam consumption average	Steam consumption maximum	Steam consumption savings	Medium output synthetic/blended fabric light cotton	Medium output cotton/linen
VEIT 8657 Module	l/h	kg/h	kg/h	kg/h	parts/h	parts/h
Type 1+1+2	-	165	265	-	900	-
Type C+1+2 (Cotton Care)	20-40	140	220	30-50	1000	700



## Modular Tunnel Finisher System for Maximum Flexibility

The VEIT 8657 Tunnel Finisher is based on a modular system to allow a wide variety of individual solutions.

Requirements or applications have changed? No problem at all. Upgrading or extending a tunnel is easy.

Individual tunnel solutions can be implemented according to application, capacity and type of product that needs to be finished.

For whatever combination is chosen, there is one common principle: The longer the tunnel, the faster the throughput of goods.

VEIT experts are happy to individually discuss the most economical solution for any requirements.

A small selection of possible Tunnel Finisher variations:



**Modules:**

- 1 x Cotton Care
- + 1 x steam module
- + 2 x air modules

- Modules:**
- 1 x pre-heating module
  - + 3 x steam modules
  - + 3 x air modules



Back





**Modules:**  
1 x pre-heating module  
+ 4 x steam modules  
+ 4 x air modules



**Modules:**  
Cotton Care  
+ 5 x steam modules  
+ 5 x air modules

We have the perfect solution for your requirements – from laundry shops to logistics centres. Just contact us!



# Technical Data

Standard models		C+1+2	C+2+2	C+2+3	C+3+4	1+2	1+2+2	1+3+3	1+4+4
Average capacity	pc/hr	1000	1500	1600	2200	1000	1400	1500	2000
Air volume (passage width 260 mm)	m <sup>3</sup> /hr	13000 (15600)	10500 (23400)	10500 (23400)	26000 (31200)	13000 (15600)	19500 (23400)	26000 (31200)	32500 (39000)
Average steam consumption <sup>1)</sup>	kg/hr	140	230	255	370	140	255	370	485
Average water consumption	l/hr	50	50	50	50	-	-	-	-
Electrical load <sup>2)</sup>	kW	7,7	7,7	8,4	10,9	6,7	8	9	11,5
<b>Dimensions and Weight</b>									
Length with/ without Conveyor	mm/ in	7035/9735 277/383	8035/10735 316/422	10295/12995 405/511	10295/12995 405/511	7065/9735 278/383	6625/9325 260/367	8885/11585 349/456	11145/13845 456/545
Height - min. (+ 150 mm / 6 in adjustable range)	mm/ in	2780 (10)/ 109 (0,4)	2780 (10)/ 109 (0,4)	2780 (10)/ 109 (0,4)	2780 (10)/ 109 (0,4)	2780 (10)/ 109 (0,4)	2780 (10)/ 109 (0,4)	2780 (10)/ 109 (0,4)	2780 (10)/ 109 (0,4)
Width (conveyor on door side)	mm/in	1650/65	1650/65	1650/65	1650/65	1650/65	1650/65	1650/65	1650/65
Width (conveyor on control side)	mm/in	1200/47	1200/47	1200/47	1200/47	1200/47	1200/47	1200/47	1200/47
Net Weight	kg/lb	2650/5842	3000/6613	3400/7496	4500/9920	1900/4189	2700/5952	3600/7936	4600/10141
<b>Equipment</b>									
Conveyor height	mm/in	-	-	-	-	1810/72	1810/72	1810/72	1810/72
Entry roller unit		<input type="checkbox"/>	<input type="checkbox"/>	<input type="checkbox"/>	<input type="checkbox"/>	<input type="checkbox"/>	<input type="checkbox"/>	<input type="checkbox"/>	<input type="checkbox"/>
Water jet rows (5 jets per row)		2	2	2	2	-	-	-	-
Preconditioning module with moisture intake from steam module		-	-	-	-	-	1	1	1
Steam modules with regulated steam suction		1	2	2	3	1	2	3	4
„Direct-blow“ air circulation modules		2	2	3	4	2	2	3	4
Steam nozzle-rows/16 nozzles		8	16	16	24	8	16	24	32
Steam quality control		<input type="checkbox"/>	<input type="checkbox"/>	<input type="checkbox"/>	<input type="checkbox"/>	<input type="checkbox"/>	<input type="checkbox"/>	<input type="checkbox"/>	<input type="checkbox"/>
Teflon resin coated steam module		<input type="checkbox"/>	<input type="checkbox"/>	<input type="checkbox"/>	<input type="checkbox"/>	<input type="checkbox"/>	<input type="checkbox"/>	<input type="checkbox"/>	<input type="checkbox"/>
Exit module, air rollers / "high-volume" manual		<input type="checkbox"/>	<input type="checkbox"/>	<input type="checkbox"/>	<input type="checkbox"/>	<input type="checkbox"/>	<input type="checkbox"/>	<input type="checkbox"/>	<input type="checkbox"/>
Loading separator		<input type="checkbox"/>	<input type="checkbox"/>	<input type="checkbox"/>	<input type="checkbox"/>	<input type="checkbox"/>	<input type="checkbox"/>	<input type="checkbox"/>	<input type="checkbox"/>
<b>Options</b>									
Non-touch Air curtain module <sup>3)</sup>		<input type="checkbox"/>	<input type="checkbox"/>	<input type="checkbox"/>	<input type="checkbox"/>	<input type="checkbox"/>	<input type="checkbox"/>	<input type="checkbox"/>	<input type="checkbox"/>
High volume exit module with automatic height adjustment		<input type="checkbox"/>	<input type="checkbox"/>	<input type="checkbox"/>	<input type="checkbox"/>	<input type="checkbox"/>	<input type="checkbox"/>	<input type="checkbox"/>	<input type="checkbox"/>
Steam suction at entrance module		<input type="checkbox"/>	<input type="checkbox"/>	<input type="checkbox"/>	<input type="checkbox"/>	<input type="checkbox"/>	<input type="checkbox"/>	<input type="checkbox"/>	<input type="checkbox"/>
Integrated steam distribution pipe		<input type="checkbox"/>	<input type="checkbox"/>	<input type="checkbox"/>	<input type="checkbox"/>	<input type="checkbox"/>	<input type="checkbox"/>	<input type="checkbox"/>	<input type="checkbox"/>
Control unit on pedestal		<input type="checkbox"/>	<input type="checkbox"/>	<input type="checkbox"/>	<input type="checkbox"/>	<input type="checkbox"/>	<input type="checkbox"/>	<input type="checkbox"/>	<input type="checkbox"/>
Hook interval range	mm in	> 250 (> 10)	> 250 (> 10)	> 250 (> 10)	> 250 (> 10)	> 250 (> 10)	> 250 (> 10)	> 250 (> 10)	> 250 (> 10)
Scent infusion		<input type="checkbox"/>	<input type="checkbox"/>	<input type="checkbox"/>	<input type="checkbox"/>	<input type="checkbox"/>	<input type="checkbox"/>	<input type="checkbox"/>	<input type="checkbox"/>
Computer network compatible (e.g. for remote maintenance/RFID)		<input type="checkbox"/>	<input type="checkbox"/>	<input type="checkbox"/>	<input type="checkbox"/>	<input type="checkbox"/>	<input type="checkbox"/>	<input type="checkbox"/>	<input type="checkbox"/>
Synchronized loading		<input type="checkbox"/>	<input type="checkbox"/>	<input type="checkbox"/>	<input type="checkbox"/>	<input type="checkbox"/>	<input type="checkbox"/>	<input type="checkbox"/>	<input type="checkbox"/>



Back